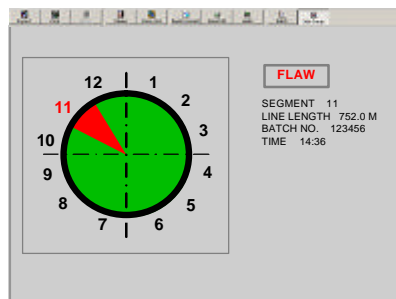
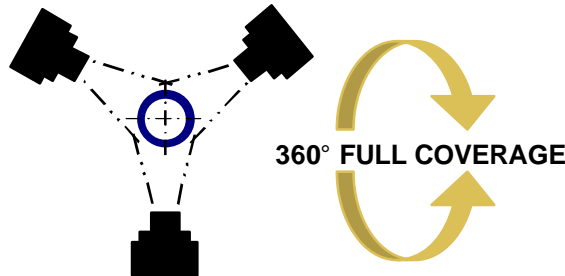




# Tubing Flaw Detection

## Non-Contact 360° Coverage

Noble Tool Corp

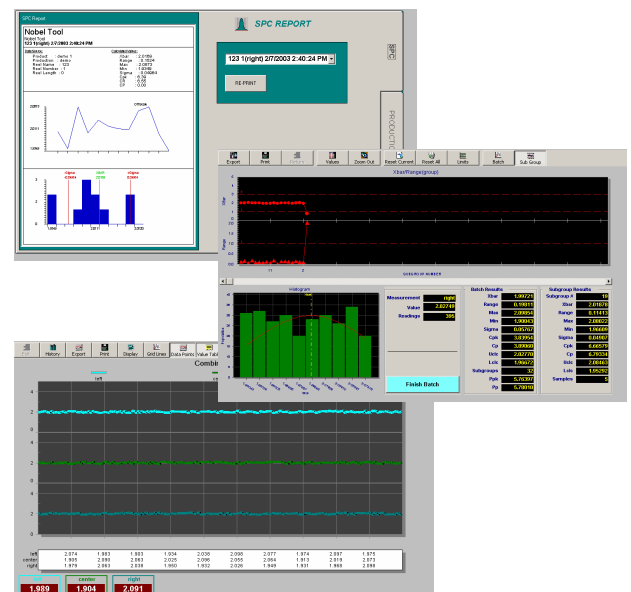
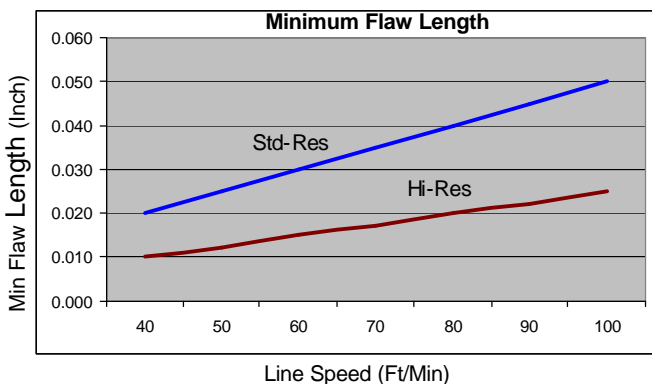


**User Interface Software**

- Flaw Location Reference
- Flaw Image Capture
- Flaw Data Stored

### Continuously monitor tubing & pipe surface quality in-process

- CCD Camera Based Technology
- O.D. Size Range Can Vary Up To 1.00" (25mm)
- Standard Setup: .094" (2.4mm) – 1.094" (27.8mm)
- Other Sizes and Ranges Can Be Configured Prior To Shipment
- Flaw Types Include: Gouges, Bubbles, Pits, Inclusions
- Flaw Detection Capabilities: Width Resolution To <.0015" (.038mm)
- Minimum Flaw Length: See Graph Below



**SPC Analysis Software / Data Reporting**

- Flaw Trend Charts w/Location Ref.
- User Defined Reporting

### Operating Specifications

#### Power Requirements

90-260 VAC, 47-63 Hz

#### Operating Temperature

5-55°C (41-131°F)

#### Environmental

90% RH, noncondensing

### Input/Output Specifications

#### RS-232 Serial Port

(1) female DB-9

#### Parallel Printer Port

(1) female DB-25

Compatible with all common printers.

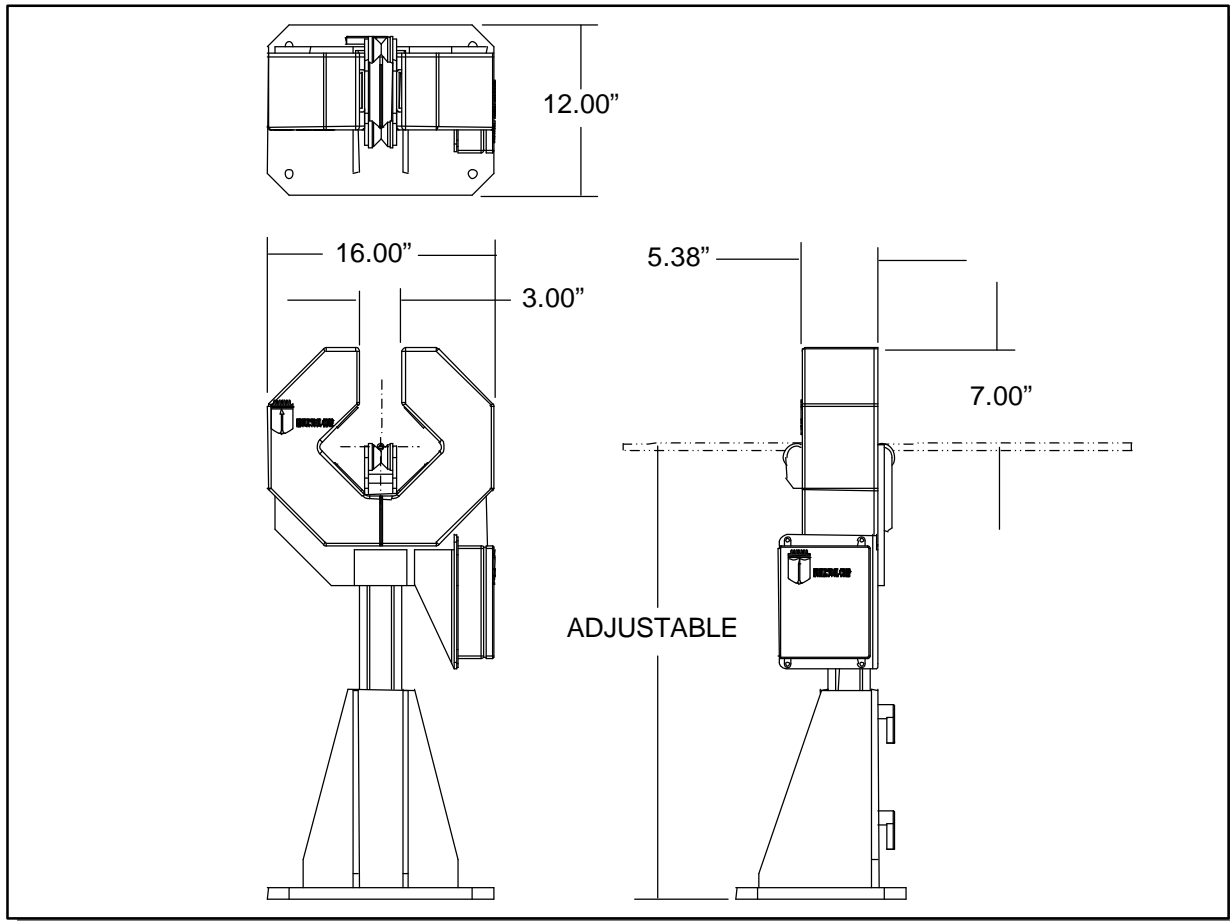
#### Digital I/O

(8) Configurable.

### Optional Industrial PC & SPC Software Package

- 17" panel mount touch screen
- Powerful SPC analysis & reporting
- Custom UI features available

### OUTLINE DRAWING



### OTHER TUBING RELATED SOLUTIONS FROM NOBLE TOOL CORP

(see detailed data sheets for more information)

#### ID/OD/WALL MEASUREMENT SYSTEMS

Scanning Laser Technology

Tubing Samples As Small As .015" (0.38mm) ID

Accuracy <.0001" (0.0025mm)

PC Based Bench Top Configuration

Auto Rotating & Manual Versions Available

#### ID FLAW DETECTION SYSTEM

Scanning CCD Camera Technology

Part Lengths Up To 36.0" (914mm)

Part ID Size Range .50" – 4.00" (50mm-200mm)

Resolution .20% of ID Range

PC Based Bench Top Configuration



**Noble Tool Corp.**

[www.nobletool.com](http://www.nobletool.com)

1535 Stanley Ave.  
Dayton, OH 45404  
Phone: 937-461-4040  
Fax: 937-461-1943

E-mail: [sales@nobletool.com](mailto:sales@nobletool.com)